

The new style to scan.



zeta



Scanners never looked better.

Neither did your scans.

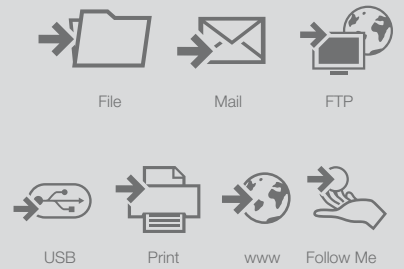
Unpack, switch on, get started

Historical books, new books, magazines, files, ring binders, contracts, balance sheets or land-use plans – there is almost nothing that you cannot capture or copy with the new *zeta*. But it doesn't just deliver excellent data, it also looks pretty good and is incredibly easy to operate. That makes the *zeta* the ideal multifunctional system for scanning and copying in libraries, archives, universities and schools. But authorities, copy shops, banks, insurance companies, solicitor's offices and media companies also quickly appreciate the performance of this compact office aid. The perfect completion of an up-to-date office.

How to plug'n'scan

Simply unpack the device, plug it in, put in the original document and off you go. The new *zeta* delivers high-quality data with the highest resolution in no time flat. You have free choice for data output. You can check, print or mail your data, save it on the USB stick, send it to your Follow-me application or provide it for download via FTP. This is how you save paper and help protect the environment today.





Product advantages

Perfectly straight, not crooked or askew

Kafka would have been delighted because the book is on its back with zeta and is scanned very carefully from the top. Simply turn the page after every scan. Distorted letters in the book fold or bent plots are automatically straightened by the software, as are original documents that are positioned crookedly. You can preview each scan on the high resolution touch screen display. Faulty scans are a thing of the past. You have a choice of the new zeta with or without convenient book cradle.

But don't just listen to us – discover the new zeta for yourself. Because scanners never looked better. Neither did your scans.

- Compact, functional and revolutionary design
- Easy installation thanks to plug'n'scan
- Convenient operation
- Independent of ambient light
- No glare for users
- Touch panel with multi-touch technology
- Brilliant color rendering
- High scanning speed
- Short scanning cycles
- High quality output data
- Preview function for quality control
- Follow-me solutions
- Multilingual user menu
- Flexible interfaces
- Remote maintenance and remote administration
- Energy efficiency – in line with Energy Star



zeta



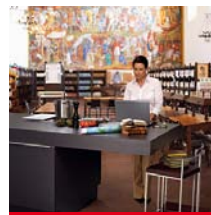
Technical data

zeta

Scan format	max. 480 x 360 mm
Safe embedded operating system	WIN 7 based
Software interface	Multi-touch user interface, interactive and intuitive
Resolution	up to 600 dpi
Scan mode	Color, greyscale, b/w
Additional options	Convenient book carriage
Dimensions (W x D x H)	540 x 630 x 600 mm
Touch panel dimensions (W x D)	270 x 487 mm
Installation surface with touch panel	780 x 540 mm
Connection values	100 – 240 V / 50 – 60 Hz
Weight	approx. 25 kg

If you are looking for a perfect solution for digitization and preservation of valuable cultural assets and documents, talk to us. For 50 years we have been managing all processes of document capturing, archiving, processing and provision of digital data with our analog and digital systems for scanning and microfilm technology at the highest level. Our systems are used worldwide by renowned archives, libraries, universities, land registries as well as commercial enterprises and service providers.

Zeutschel: The Future of the Past.



Providing of documents – Like being there.

NMS

MICROFILM ■ SCANNER ■ PRINTER ■ FAX ■ ONDERHOUD ■ REINIGING ■ REPARATIE
VERKOOP ■ TONERS ■ CARTRIDGES ■ MUNT-AUTOMATEN ■ OPBERGSYSTEMEN

MICROFILMAPPARATUUR ■ RANDAPPARATUUR

KANTOORMACHINES

WATERINGWEG 52, 2031 EJ HAARLEM, POSTBUS 6124, 2001 HC HAARLEM
TEL +31 (0) 23 532 62 28, FAX +31 (0) 23 542 72 37, INFO@NMS.NL, WWW.NMS.NL