

you can
Canon

DEPARTMENTAL
DOCUMENT SCANNERS

DR-3080CII
DR-3060

Select a versatile and ultra
reliable scanning solution.



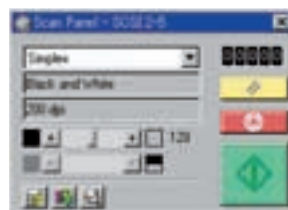


Compact, user-friendly desktop scanner with dependable results

Canon's next generation DR-3080CII and DR-3060 scanners offer speed and flexibility in a compact format, with a range of unique features to enhance ease and efficiency. Ready to meet the most challenging demands of departmental scanning, they offer flexible scanning modes with improved speed and image quality - as well as simplified operation. The DR-3060 produces image files in grayscale or black and white, while the DR-3080CII also features 24-bit color scanning and has two interfaces to choose from (SCSI III or Hi-Speed USB 2.0).

SUPERIOR SCANNING SPEED

The DR-3060 and the DR-3080CII provide diverse scanning options so that you can create the image files which best match your needs. Standard text documents can be scanned in Black & White (Binary) mode at speeds of up to 40ppm (or 80 image per minute when duplexing). If your document contains photos, Error Diffusion or 256-level Grayscale mode deliver better results. Furthermore, the DR-3080CII offers a 24-bit Color mode for either simplex or duplex scanning. Innovative technology promotes fast throughput whether you're scanning in color or grayscale.



EASY, USER-FRIENDLY OPERATION

An on-screen 'scan panel' display enables quick and easy operation, allowing users to change settings via this virtual operation panel, even for batch separation. When simplex and duplex documents are mixed in a batch, a 'skip blank page' function automatically detects and discards blank pages. Other user-friendly features include up to 20 user-preference settings and a handy help function.



TIME-SAVING, PRE-SCAN MODE

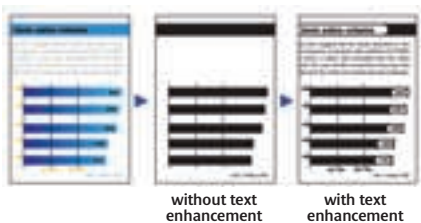
A unique 'pre-scan' mode simplifies operation and saves time when scanning a batch of documents. When viewing the image of the first page on screen you can adjust brightness and contrast and see immediate results (unlike the preview function). This setting is then applied to the rest of the batch, without having to re-scan the first page. This even works when scanning in black & white (binary) mode.

PRODUCTIVE PAPER HANDLING

The highly evaluated document feeding capability of Canon's scanners guarantees that you always benefit from durable, flexible and reliable paper feeding, with simplex/duplex scanning for all sizes up to B4.

The DR-3080CII can even handle larger sizes. It features the Folio function which has the ability to scan larger documents (between B4 and A3 sizes). You simply fold your document in half and feed it into the scanner. The DR-3080CII will then scan both sides of the folded document and combine the two sides into a single image.

DR-3060: Text Enhancement mode is included.



ENHANCED LEGIBILITY FOR LIGHTER TEXT

When it comes to scanning for document management purposes, nothing is more essential than making sure that your image files can be easily read by others. To this end, the DR-3080CII features Advanced Text Enhancement for optimizing black and white images. Advanced Text Enhancement significantly improves the quality of image files derived under poor conditions, such as from documents with colored backgrounds, with light colored lettering, or documents filled out in pencil.

VERSATILE RANGE OF APPLICATIONS

Bundled software for the DR-3080CII and DR-3060 scanner include ISIS™, TWAIN drivers and CapturePerfect for Windows® 98/ME/NT/2000/XP. These work with a wide range of software packages, offering an extensive range of imaging applications to suit your precise requirements.

ADVANTAGEOUS ACCESSORIES

An optional Endorser is available, which automatically stamps documents for control and tracking purposes. Another productive option is Canon's Exchange Roller Kit, ensuring maximum uptime throughout the scanner's entire lifetime.

DR-3080CII and DR-3060 features and benefits

Duplex 24-bit colour & 256-level grey scale support*

High speed, high quality scanning

Simplex/duplex scanning up to B4

Folio scanning (B4 to A3 sizes)*

Convenient 'pre-scan' facility

RGB colour drop-out*

Skip blank page function

Skew correction by software

User-friendly, on-screen scan panel

NCR paper support

Dual Interface with SCSI 3/USB2.0

Bundled software: ISIS™, TWAIN drivers, CapturePerfect

Energy Star compliant

** DR-3080CII only*



Specifications DR-3080CII / DR-3060

Type	Desktop Document Scanner	Document type	NCR paper and perforated paper for a binder acceptable
Sensor	Sensor: Contact sensor (CMOS CIS)	ADF	10 mm (Approx. 100 sheets in case of 80g/m ²)
Light source	Optical resolution 300 dpi DR-3080C: RGB 1 line LED array for front, yellow-green 1 line LED array for back	Document size detection	By drivers
Scanning modes	DR-3060: Yellow-green 1 line LED array for front and back	Document stacker	Face down in 10 mm (Approx. 100 sheets in case of 80g/m ²)
	Black & White (Binary): 300 x 300 High Speed, 300 x 300, 240 x 240, 200 x 200 dpi - Simplex/Duplex 256-level Grayscale: 300 x 300 High Speed, 300 x 300, 240 x 240, 200 x 200 dpi - Simplex/Duplex Text Enhanced: 300 x 300 High Speed, 300 x 300, 240 x 240, 200 x 200 dpi - Simplex/Duplex Error Diffusion: 300 x 300 High Speed, 300 x 300, 240 x 240, 200 x 200 dpi - Simplex/Duplex 24-bit Color: 100 x 100, 200 x 200 dpi - Simplex/Duplex (DR-3080CII only)	Output interface	DR-3060 SCSI II DR-3080CII SCSI III, Hi-Speed USB 2.0
Scanning speeds (A4 Portrait, Binary)	300 x 300 dpi High Speed: 40ppm (Simplex), 80ipm (Duplex) 200 x 200 dpi: 30ppm (Simplex), 60ipm (Duplex) 240 x 240 dpi: 25ppm (Simplex), 50ipm (Duplex) 300 x 300 dpi: 20ppm (Simplex), 40ipm (Duplex)	Software	ISIS/TWAIN Driver, CapturePerfect
Scanning resolution	300 x 300 dpi, 300 x 150 dpi, 240 x 240 dpi, 200 x 200 dpi	Others	Count only Margin scanning Skew correction by software RGB dropout colour (DR-3080C only)
Document feeding mode	Normal/Auto/Manual	Dimensions (WxDxH)	Tray closed: 344 x 280 x 191 mm Tray opened: 344 x 555 x 191 mm
Document size	Width: 55-257 mm Length: 70-364 mm Thickness: Auto Feed 0.06-0.15 mm Manual Feed 0.05-0.20 mm	Weight	8.1 Kg
		Optional accessories	Endorser ED500 Exchange Roller Kit Ink Roller
<small>™All company and/or product names are trademarks and/or registered trademarks of their respective manufacturers in their markets and/or countries. Canon reserves the right to change specifications without notice.</small>			

you can
Canon

NMS	
<small>MICROFILM ■ SCANNER ■ PRINTER ■ FAX ■ ONDERHOUD ■ REINIGING ■ REPARATIE VERKOOP ■ TONERS ■ CARTRIDGES ■ MUNTAUTOMATEN ■ OPBERGSYSTEMEN</small>	
MICROFILMAPPARATUUR ■ RANDAPPARATUUR KANTOORMACHINES	
<small>WATERINGWEG 52, 2031 EJ HAARLEM, POSTBUS 6124, 2001 HC HAARLEM TEL +31 (0) 23 532 62 28, FAX +31 (0) 23 542 72 37, INFO@NMS.NL, WWW.NMS.NL</small>	